

## Automatic Veterinary Syringes

**0.5cc ThaMa 205**  
**1cc ThaMa 210**  
**2cc ThaMa 240**  
**5cc ThaMa 215**



### **Operating Instruction:**

The ThaMa Syringes gives you the possibility to inject the vaccine in the correct adjustable syringe that you need.

Up to 0.5cc – ThaMa 205

Up to 1cc – ThaMa 210

Up to 2cc – ThaMa 240

Up to 5cc – ThaMa 215

These multipurpose Automatic Adjustable Syringes are made of the best materials, are oil-proof, non corrosive, all parts can be sterilized up to 125°C. The glass barrel is made of clear and tempered glass, exactly graduated, enabling correct setting and continuous control during operation.

### **Before Use:**

Check that all threads are screwed tight and the glass barrel is not damaged. Make sure that the valves, spring and washers are properly positioned into their base.

Put a drop of castor oil upon the O-Ring.

### **Set the Dose:**

1. Unscrew the adjusting screw nut.
2. Adjust with the adjusting screw to the volume you need - use the end piston as a sign.
3. Lock with the screw nut.

### **After Use:**

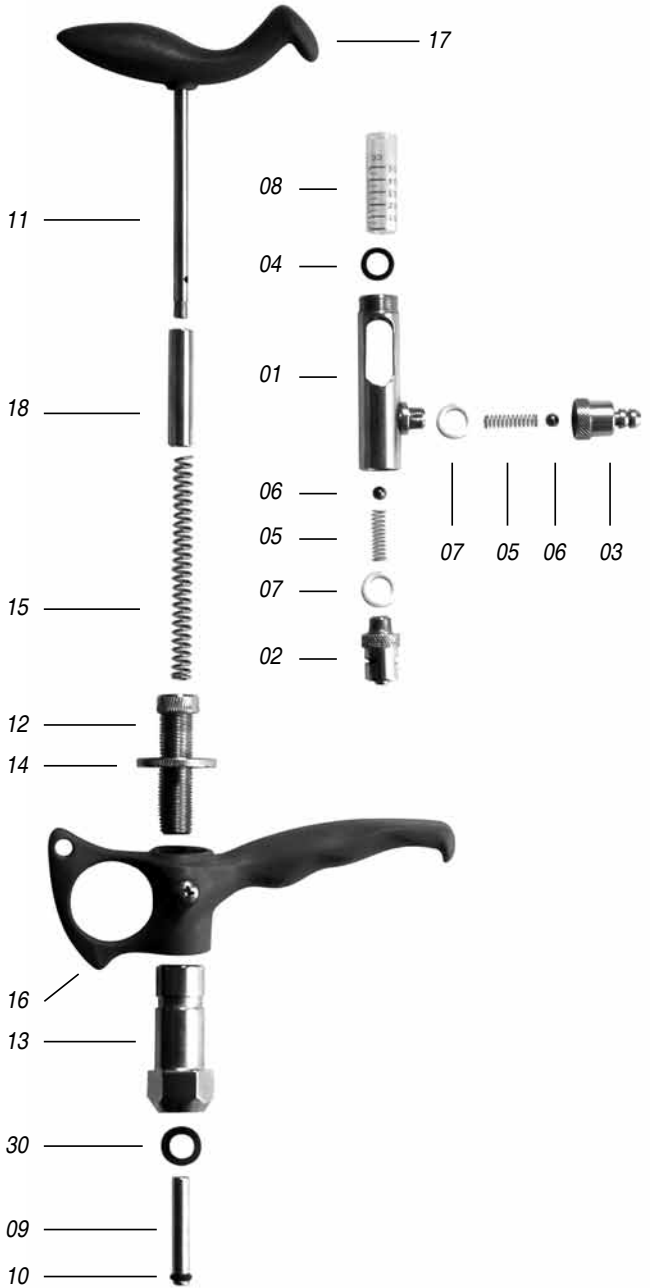
1. After each time that the syringe is being used, pump the syringe in clear water 6-10 times, to remove any residue of the material from the body, needles, and tube (be careful not to get pricked by the needle).
2. Open the body cover and wash all the parts in clear water.
3. Open the luer lock adapter and the tubing valve housing and wash them in clear water.

### **Note:**

**Pay attention, and take good care not to lose the small parts, like valves, valves spring and valves plastic washers.**

0.5cc ThaMa 205  
 1cc ThaMa 210  
 2cc ThaMa 240  
 5cc ThaMa 215

- 01 Syringe Body
- 02 Luer Lock, Needle Adapter
- 03 Tubing Valve Housing
- 04 Cylinder Washer
- 05 Valve Spring
- 06 Valve Stainless Ball
- 07 Valve Plastic Washer
- 08 Glass Cylinder
- 09 Piston
- 10 Piston O-Ring
- 11 Piston Shaft
- 12 Adjusting Screw
- 13 Body Cover
- 14 Adjusting Screw Nut
- 15 Handle Spring
- 16 Finger Grip Handle
- 17 Upper Handle
- 18 Spring Housing
- 30 Fiber Washer
- 99 Spare Parts Kit



**When order:**

Please add the type model of the syringe (205, 210, 240 or 215) before the No. of the part (for example: 205-01).